



INEKE

HANS

--> mindmap



Black Gold Coffeepot and family, 2002



Forest Bench for Royal Dutch Forest Guide, 2005

It is interesting to place work between family and friends every now and than. It gets pleasantly connected to the real world and somehow seems less important than when on show on a pedestal. In the last few years I planted my work several times like cuckoo eggs in real life situations or in between related items.

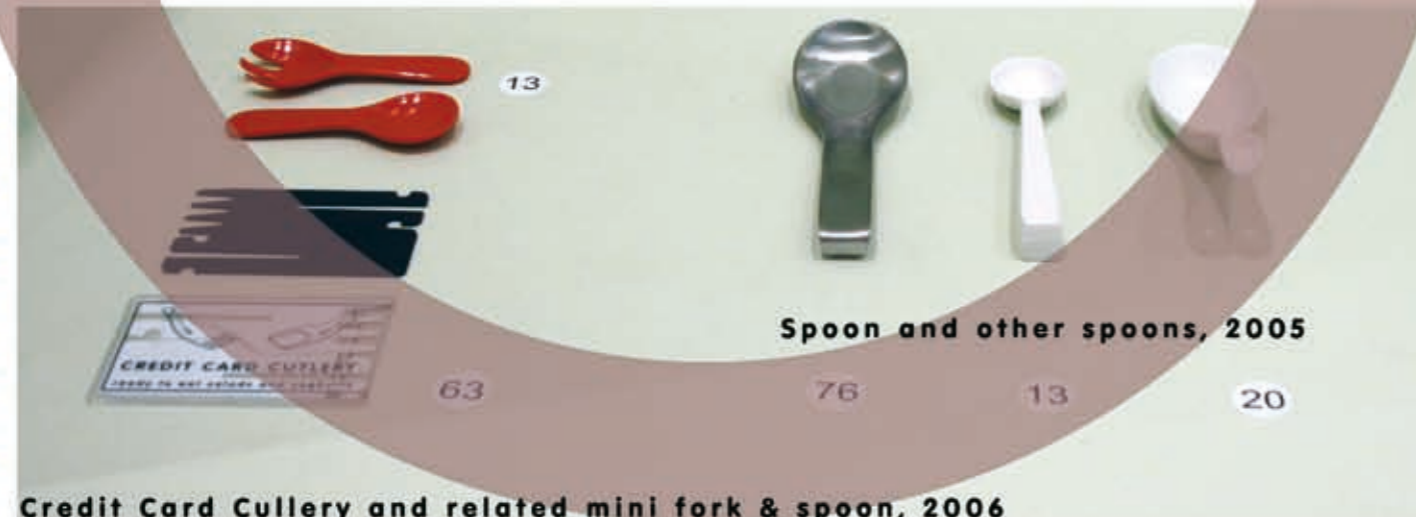
cuckoo



Deluxe Bench from recycled plastic, 2005

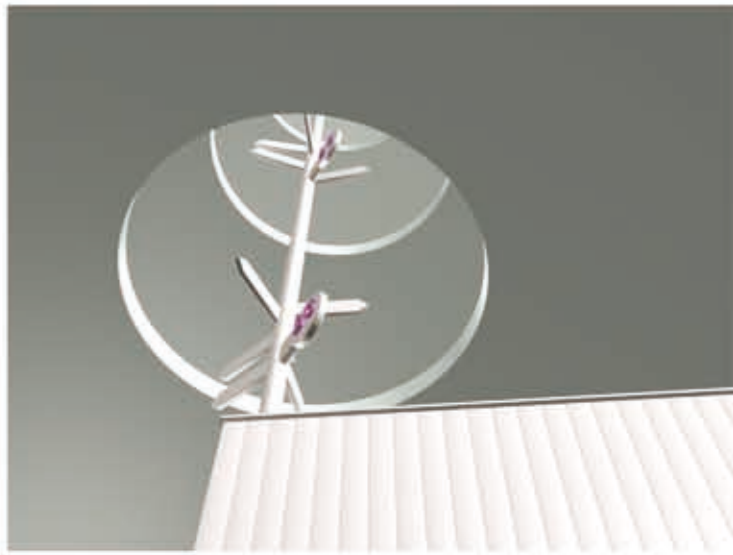


personal shopper
Messe Frankfurt 2008



Spoon and other spoons, 2005

Credit Card Cullery and related mini fork & spoon, 2006



entrance + routing Bruishuis Arnhem, 2009



...signs

When confronted with unknown objects we scan them to find meaning and their potential use.



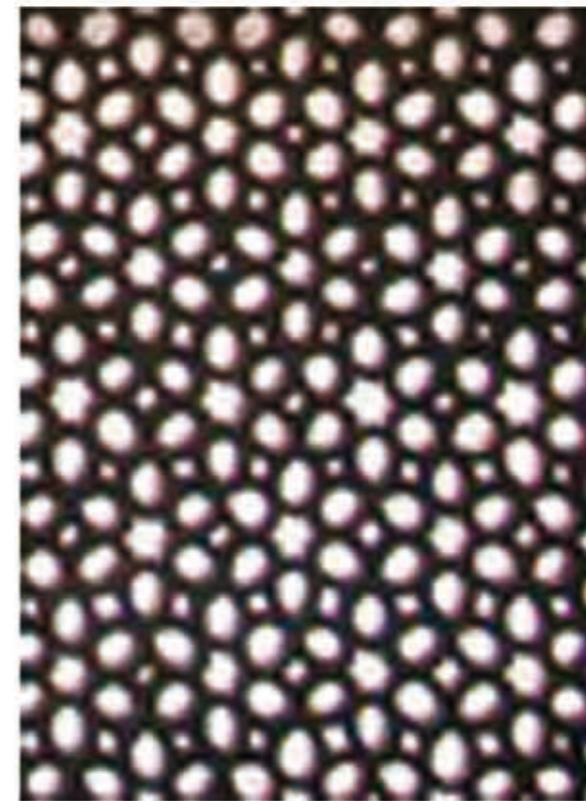
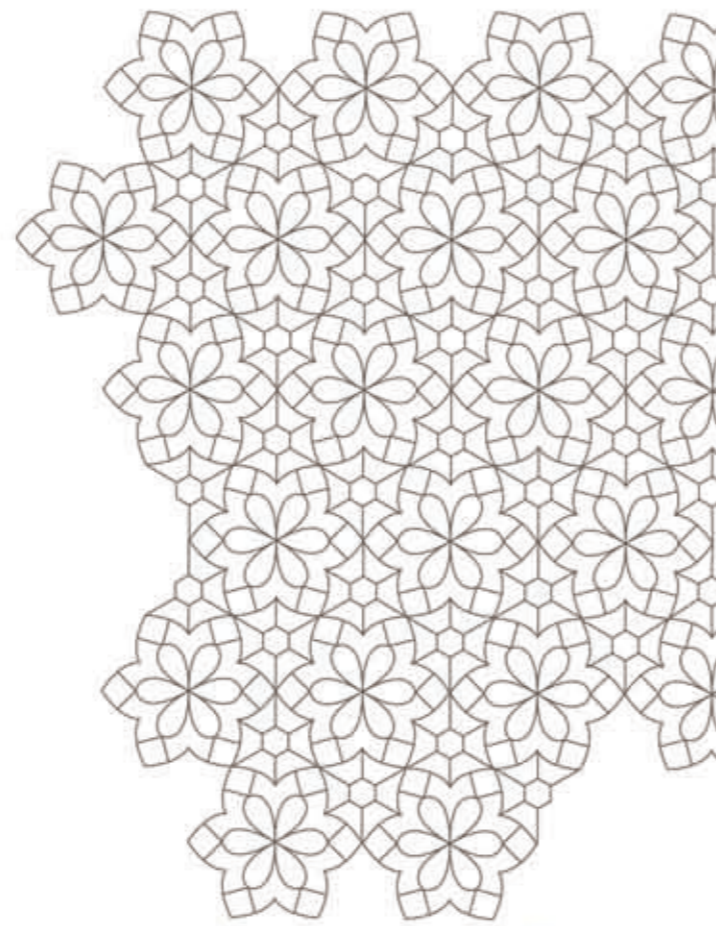
Black Gold candle holder, 2002

Seven Chairs in Seven days, 1993-1995

If you ask a child to draw a tree you get two lines and a circle, a house is a square with a triangle on top.

clear...





1 + 1 =



Cinderella weekdays, 2004
(Netherlands Textile Mueum)

pictogram -> clarity - > reason -> heart -> play ->

construct -> decoration -> technique -> move on ->



Laser Chair, 2002



Jolly Jubilee for Arco, 2005



Neo Country for Cappellini, 2007



$1 + 1 =$



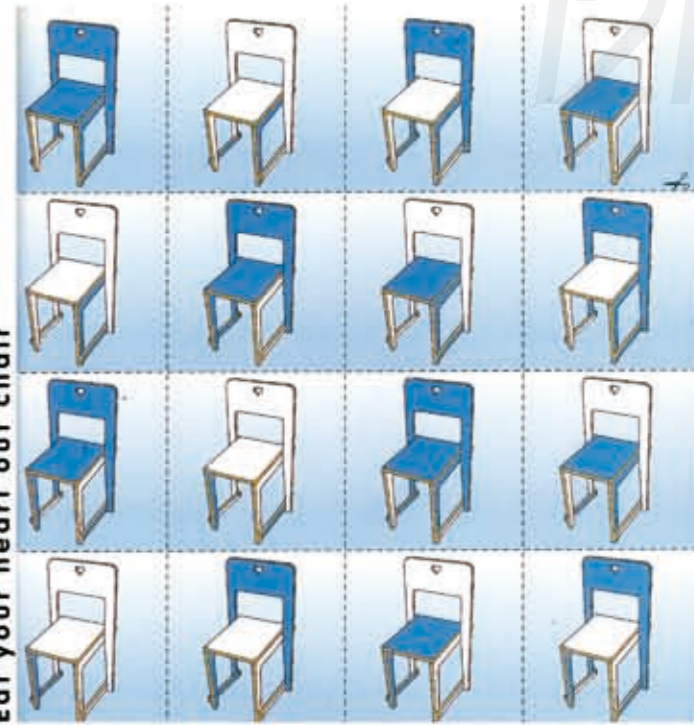
Cinderella sundays, 2004



Garlic Crusher for Royal VKB, 2005



Eat your heart out chair



121

$1 + 1 + 1 + 1 + 1 + 1 = 16$



Fracture Seat for Cappellini, 2007



FLY for Arco, 2008

INEKEHANS/ARNHEM ©2009

INEKEHANS® COLLECTION:
POP CORN
W: www.pop-corn.fr
E: contact@pop-corn.fr